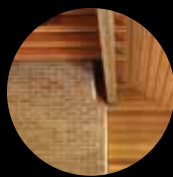




rebuild



residential design and construction 2011

APRIL 28 and 29 / SEAPORT WORLD TRADE CENTER, BOSTON

From the producers
of Build Boston

BSA

Boston Society of
Architects / AIA



VIEWED TO BE THE BEST.™

WOLFERS
THE LIGHTING EXPERTS

MARVIN[®]
Windows and Doors
Built around you.

FREE ADMISSION to the exhibit hall if you register by April 7 / www.rdcbboston.com

What's inside?

The Exhibit Hall

- 4 Partial exhibitor list
- 5 Exhibit-hall hours
- 5 The Lounge
- 5 Portfolio Showcase
- 5 Photo gallery
- 5 New and green products
- 14 Learning Stage

The Conference

- 7 Small-firms breakfast
- 7 Continuing education
- 7 Tony Platt Scholarships
- 8 Energy track
- 10 Housing track
- 12 Renovation track

Event Information

- 16 How to register
- 16 Accommodations
- 16 About the Seaport Hotel
- 16 Free workshops
- 16 Confirmations
- 16 Refund policy
- 16 General questions
- 17 Conference pricing
- 19 Registration form

April 28 and 29, 2011

Seaport World Trade Center, Boston

Exhibit-hall hours:

Thursday, April 28
10:00 am–5:30 pm

Friday, April 29
10:00 am–3:00 pm

BSA

The Boston Society of Architects (BSA) is a nonprofit organization committed to professional development for its members, advocacy on behalf of great design and sharing an appreciation for the built environment with the public at large. www.architects.org.



RDC is pleased to be affiliated with *ArchitectureBoston*, the award-winning ideas magazine published by the BSA. Advertising: sales@architects.org. www.architectureboston.com.



RDC is produced in collaboration with ResourcePlus Shows & Events, a full-service event-management company specializing in event planning and management services for tradeshows, meetings and special events. www.resource-plus.com.



welcome

Welcome to Residential Design and Construction 2011.

This is the year everything changes.

In 2011, signs of recovery are all around us. Creative solutions and a pragmatic approach have kept us moving, but competition to succeed is as stiff as ever. Traditional project markets are smaller and profit margins are thinner, while specialization and new geographic markets rule the day.

Rebuild your practice, rebuild your industry.

It's up to you to make the innovations your business needs. Find expert advice to design a recession-proof practice, view hundreds of innovative residential products and build your contacts at the Northeast's premier residential building-industry event.

April 28 and 29, 2011

Seaport World Trade Center, Boston



A

Advanced Solar Protection
Anchor Insulation
Andersen Windows
Andover Retractable Screens
Architectural Openings
Atlantic Shower Door

B

Berkshire Wilton Partners
B.L. Makepeace
Boston Home magazine
The Boston Shade Company
Builder/Architect magazine

C

C&R Flooring
Caron Industries
Cleary & Son
Closet & Storage Concepts
CMC Elevator Corporation
Crown Point Cabinetry

D

Delia
Designer Doors
Design New England

E

East Coast Stone
EDOS Manufacturers Reps
EFI/Energy Federation
Elite Media Solutions
Endicott College Van Loan School of Graduate and Professional Studies
Enviroshake

F

Fallon Custom Homes & Renovations
Fantech
FBN Construction Company
F.D. Sterritt Lumber Co.
Ferguson Enterprises
F.H. Perry Builder
Finishedwood.com/Cedar Valley

G

Gallagher Home Builders
GF Rhode Construction
Graphisoft/Integrated CADD Services
Green Stamp Insulation

H

Home Entertainment Expo
Horner Millwork
Huber Engineered Woods
Hull Forest Products

I

IFDA
iLevel by Weyerhaeuser
IMAGINiT Technologies
Imtek Reprographics
In Design Studio
Irish Natural Stone

K

KBS Building Systems
Ken Vona Construction
Kochman Reidt + Haigh Cabinetmakers

L

Landmark Services
Landry & Arcari Oriental Rugs and Carpeting
Longfellow's Cedar Shingles & Shakes
Louiseville Fiberboard
Lucia Lighting & Design
Lumber Liquidators

M

Marketing & Sales Associates
Marvin and Integrity Windows and Doors
Marvin Replace & Remodel
Massachusetts New Homes with ENERGY STAR
Merz Construction
Metropolitan Cabinets & Countertops
Moduline Cabinets

N

National Fiber
Needham Decorative Hardware
New England Architectural Finishing
New England Concrete Supply
New England Home magazine
Northeastern Lumber manufacturers Association

P

Panel Pros
Payne-Bouchier
P.C. Richard and Son Builder Division
Pella Windows and Doors of Boston
Pinnacle Window Solutions
Preferred Building Systems

R

Rhino Flooring Solutions
Runtal North America

S

Sage Builders
Sanford Custom Builders
S+H Construction
Signature Lighting Controls
simpleHome
SMART VENT
SoftPlan Architectural Design Software
Southern New England Home
South Shore Millwork
Splash
Stephen Terhune Woodworking
Stoneyard.com
The Stove Shoppe
SunTouch Electric Floor Warming
Superior Walls Foundations
Swenson Granite Works

T

THERMOMASS Building Insulation Systems
Thoughtforms Corporation
ThyssenKrupp Access
TJ's Plumbing & Heating
TOPAZ Engineering Supply
Trufig

U

UMASS/Caitlin Raymond Int'l. Registry
Upscale Living magazine

V

VELUX America
Vermont Plank Flooring
Vermont Verde Antique
Vintage Makers

W

Walpole Woodworkers
Wolfers Lighting
Wood Floor Inspectors of N.E.
Woodway—A Division of LWO

The residential building industry is open for business.

Transformation is taking place at an astounding rate in residential building markets; don't wait for changes in the industry to come to you. View hundreds of innovative and residential products on the tradeshow floor, and hear the latest in industry insight and market-driven advice at RDC 2011.

NEW! Exhibit Hall hours

Thursday, April 28
10:00 am–5:30 pm

Friday, April 29
10:00 am–3:00 pm

NEW! The Learning Stage

Industry experts deliver a dozen riveting 30-minute presentations at no cost. Gather at the Learning Stage in the exhibit hall. Learning units are not available, and seating is first-come, first-served. For details, go to page 14.

The Lounge

Stop by the Lounge to relax, network and meet colleagues. Features include a napkin contest, book signings and a Thursday afternoon happy hour.

Portfolio Showcase

Come by this special area in the Lounge to view portfolios of residential projects submitted by architecture, interior design, landscape design and other participating firms.

Photo gallery

See projects by the Northeast's top design firms throughout the exhibit hall.

BSA Store

Find high-quality books, innovative home and travel products, and other curiosities—brought to you by Grand—www.grandthestore.com. BSA members receive a 20% discount.



Book signings

Several RDC workshop presenters are nationally renowned authors as well as residential-design practitioners and will be signing their latest releases in the Lounge.

New and green products

Examine the latest materials, pick up literature on new services and discover new technologies available.

C&R Flooring

www.candrflooring.com

Bona certified craftsman professionals by C&R Flooring

Caron Industries

www.caronindustries.com

Tropical-style door collection

Hull Forest Products

www.hullforest.com

Wide-plank flooring from local southern New England forests





focused



A focused approach: Energy, Housing and Renovation

Three education tracks represent the most-active industry markets. Twenty-four continuing-education-qualified workshops emphasize practical lessons to further your practice. View workshop descriptions on pages 8–13.

SA1 Small-firms breakfast

Thursday, April 28
8:30–10am

The new Massachusetts mechanics lien law

Effective July 1, 2011, registered architects, landscape architects, professional engineers, licensed site professionals and land surveyors will share the same mechanics' lien rights that contractors and subcontractors have benefited from for decades. The amendments to the Massachusetts law will afford design professionals working on any private project involving an improvement to real estate, the security of the value of their services, labor and materials furnished. Join the AIA MA Government Affairs Committee, the BSA Small Practices Network and the BSA Residential Design Committee for a morning of food, networking and a discussion with Christopher Noble, Esq., Hon. BSA, author of the mechanics lien law.

Continuing education

Architects, interior designers and other industry professionals may earn continuing-education credits by attending RDC 2011 workshops.

AIA members must register with their membership number. Attendees earn one AIA Learning Unit (LU) for each workshop hour (e.g., 1.5 LUs for a 90-minute workshop). Please note that Sustainable Design (SD) is a subset of Health, Safety and Welfare (HSW); therefore, all SD credit also qualifies as HSW credit.

If you're an architect but not an AIA member, pick up a certificate of attendance for your continuing-education record at the BSA Continuing Education desk in the conference center. To become a member, go to www.architects.org/membership.

Earn LUs on the exhibit floor

Pick up self-reporting worksheets for tradeshow research in the registration area and at the BSA Continuing Education desk.

Tony Platt Scholarships



BSA scholarships cover the cost of one RDC workshop and are available to young A/E/C professionals. The fund was established in memory of Tony Platt FAIA, a Boston architect committed to broadening opportunities for everyone in the industry—especially young professionals. Apply at www.rdcboston.com/scholarships.



Discounts and a free exhibit-hall pass are available through April 7. Register early.

energy



Energy efficiency is the challenge of the day in the design and construction industry—especially in New England, where we experience four dramatic seasons. From net-zero energy to Passive House to LEED, the Energy track at RDC keeps A/E/C professionals current in this shifting energy landscape.

A1

Thursday, April 28
8:30–10:00 am | SD

The Massachusetts State Energy Code and stretch code

The 2009 International Energy Conservation Code (IECC) is now widely enforced in many Northeast states. This version is staking out a clear direction for future versions of the energy code, one that focuses on in-field verification. For some Massachusetts communities, a more aggressive code—the MA stretch code—is already here. Grasp the mandatory 2009 IECC and stretch code requirements, and the direction in which the 2012 IECC may be going.

Mike Schofield, project manager, Conservation Services Group

Caitriona Cooke LEED AP, program manager, Conservation Services Group

A2

Thursday, April 28
10:30 am–12:00 noon | SD

High-performance modular housing: The Passive House standard for Habitat for Humanity

The architect and modular-house manufacturer of Habitat for Humanity's first house built to Passive House standards share the opportunities, strategies and challenges of achieving this low-energy building through modular construction. From cost-effective building techniques to important design considerations, these building professionals focus on the process of high-performance modular buildings.

John Tittmann AIA, partner, Albert, Righter & Tittmann Architects

JB Clancy AIA, Passive House consultant, partner, Albert, Righter & Tittmann Architects

Chet Pasho, NAHB-certified green professional, building science consultant, Preferred Building Systems

A3

Thursday, April 28
1:00–2:30 pm | SD

Near net-zero energy is within reach

Using recently completed custom houses, this seminar demonstrates how combining good design with several different energy-saving features can lead to high-performing, attractive houses that use far less energy than you'd think possible. Examining actual construction and operating costs, the presenters show that efficient houses are practical and buildable, and can reach near net-zero-energy performance while remaining appealing, comfortable places to live.

David Raabe, regional sales manager, TIMBERPEG

Jesse Kendall PE, structural engineer, TIMBERPEG



A4

Thursday, April 28
3:30–5:00 pm | SD

Making a green house: What it really takes in the real world

Visit two green projects, and see what worked—and what didn't. Hear from owners, architects and a building-science expert about how they evaluated and set realistic, achievable goals for greening their residential remodeling projects and what it took to complete the projects successfully. Topics include solar hot water trouble spots, getting all the subcontractors to pay attention, exterior detailing for durability, alternative insulation methods, air conditioning a green house and sustainable interior materials.

James Carr AIA, owner, James Carr architecture + design

Jim Newman LEED AP, principal, Linnean Solutions

Peter Yost, director of residential services, BuildingGreen

Werner Lohe, homeowner

A5

Thursday, April 28
5:30–7:00 pm | SD

Window retrofits: Understanding and selecting window treatments

It's really hard to compare all the options: cellular shades, awnings, films, quilts, storms. Working with Lawrence Berkeley National Labs, BuildingGreen is developing clear and concise resources that building professionals can use to compare and contrast all these options. The presenter reviews the issues and client-friendly tools to make apples-to-apples comparisons on the options for improving window performance using attachments.

Peter Yost, director of residential services, BuildingGreen

A6

Friday, April 29
8:30–10:00 am | HSW

Sorting out energy codes: 8th edition base code, stretch code and Energy Star

Sort out the practical implications of energy requirements in the 8th edition of the Massachusetts building code, the 2009 IECC energy code and the stretch code. Focusing on what designers and contractors need to do, the presenters offer some checklists for plans and for use in the field. Topics include specific products and techniques that work, the hurdles that M/E/P and insulation subcontractors need to jump over, the roles of third-party testers, line items to include in your budget, and the climate of code-enforcement officials.

Jamie Leef, division manager for renewable energy and green building, S+H Construction

Sarah Lawson, project manager, S+H Construction

A7

Friday, April 29
10:30 am–12:00 noon | HSW

Case studies in green and universal design: From the global to the local

Delve into recent residential projects that boast a pairing of green and universal design principles. Case studies from Europe, Asia, Latin America and the United States include a recently completed built project by the IHCDStudio (the design and consulting arm of the Institute for Human Centered Design): a gut renovation and addition to a four-season, western Massachusetts weekend home completed within a universal design framework and certified as an Energy Star for Homes residence.

Josh Safdie, director of IHCDStudio, Institute for Human Centered Design

A8

Friday, April 29
1:00–2:30 pm | SD

Sustainable interior design through energy upgrades

All residential remodeling projects and additions should begin with an energy audit, creating a baseline of current energy-use data that will inform all future design decisions. Understand how to use diagnostic energy-modeling testing results to recommend placement of heating ducts, windows, ceiling heights, and wall and flooring depth requirements. Led by a green interior designer and a certified Home Energy Rating System (HERS) rater, you'll explore case studies illustrating the broad impact of new energy technologies on the design practice of architects, interior designers and M/E/P engineers.

Nicole Goldman, principal, 'g' Green Design Center

Richard Brown, HERS rater, Certified Energy Ratings



**Register early
for best selection
and workshop
discounts.**

housing



Housing is the design and construction industries' wicked problem. To keep both our university graduates and our vital working class as active members of our regional economies, we need a healthy range of housing options—a range we currently don't have. More funding sources than ever before are available for housing, and forward-thinking designers are finding ways to build projects that fit the bill.

B1

Thursday, April 28
8:30–10:00 am | CR

Make your local housing authority a steady client

The Commonwealth annually makes grants totaling almost \$90 million to 242 local housing authorities (LHAs) across the state to maintain and modernize their residential portfolios. With the recent introduction of a state formula funding system for capital needs, LHAs need designers for numerous small renovation and rehabilitation jobs on single-family and multifamily projects, along with the occasional comprehensive modernization project. Are you interested in providing design services to this vital public sector? Find effective strategies for getting and keeping public-housing clients, and learn approaches to work with (and get selected by!) the Department of Housing and Community Development.

Ray Frieden, director, Bureau of Modernization and Construction, Department of Housing and Community Development

Richard Ness AIA, director of technical services, Department of Housing and Community Development

Bill Holland AIA, LEED, architect, Department of Housing and Community Development

David McClave, director, Construction Management Unit, Department of Housing and Community Development

B2

Thursday, April 28
10:30 am–12:00 noon | SD

Green multifamily housing: Energy retrofits and why metrics matter

Learn about ways that public-housing authorities and nonprofit developers in Massachusetts are greening existing multifamily housing, with a focus on energy efficiency of heating systems and the building envelope. Recognize how web-based energy benchmarking is helping inform capital-investment decisions and property management, as well as ensuring that performance is improving once changes are implemented. Presenters discuss how they use innovative materials and equipment, as well as long-standing weatherization techniques and tenant engagement, to reduce operating costs and improve tenant health and comfort.

Debra Hall, sustainability program developer, Department of Housing and Community Development

Ed Connelly, president, New Ecology

B3

Thursday, April 28
1:00–2:30 pm | HSW

40R and inventive financing techniques

Understand the interrelationship among housing prices, housing production, smart growth zoning and innovative financing techniques, particularly as they may be combined in older industrial downtowns. Uncover the theory behind and the history and accomplishments of Chapter 40R—Smart Growth Zoning and Housing Production in Massachusetts, and get a look at anticipated demographic changes in Massachusetts over the next 15 years, as well as the need for and potential of the school cost reimbursement formula of Chapter 40S. Explore a financing technique used in Greenfield, Massachusetts, that makes mixed-use projects with a significant housing component financially and logistically feasible.

Ted Carman, president, Concord Square Development Company

B4

Thursday, April 28
3:30–5:00 pm | SD

Spencer Green in Chelsea, Massachusetts: A case study in “community”

Spencer Green is a 48-unit affordable, sustainable rental-housing project that re-establishes the continuity of a residential neighborhood whose fabric has been fragmented by intermittent industrial uses. Beyond simply reconstructing a consistent residential street wall, the development aspires to create a lively, healthy community in and of itself. Hear about the design and management challenges of creating “community” in a single development. Topics include site planning and unit aggregation strategies as they pertain to security, social dynamics and economics in affordable housing.

Matthew Littell LEED AP, principal, Utile

Emily Loomis, real estate project manager, Chelsea Neighborhood Developers

B5

Thursday, April 28
5:30–7:00 pm | HSW

Case study: Major urban redesign of Old Colony

One of the oldest federal public housing developments in the country, Old Colony in South Boston, is undergoing a major urban redesign. The 16-acre site built in 1939 originally comprised 840 units—Phase I includes the demolition of seven existing, dilapidated buildings to make room for the new construction of five residential buildings providing 116 affordable housing units and a new community center. The case study explores the redevelopment of a severely distressed Boston Housing Authority project to create a new sustainable community, including its history, the funding and political environment that created the mechanism for the project to come to fruition, its ambitious goal of net-zero energy use and planning for future phases.

Michael Binette AIA, NCARB, principal, The Architectural Team

James Szymanski AIA, LEED AP, associate, The Architectural Team

Edward Bradford AIA, LEED AP, associate, The Architectural Team

B6

Friday, April 29
8:30–10:00 am | HSW

Accessibility requirements in multifamily housing

Untangling the overlap of disability laws, accessibility standards and building-code requirements for multifamily housing, presenters review requirements for accessibility in the Americans with Disabilities Act (ADA), the Fair Housing Act, the Rehabilitation Act, the Massachusetts Architectural Access Board regulations and the International Building Code. Learn about new dwelling unit requirements in the 2010 ADA Standards for Accessible Design, as well as unit types under state and model building codes and the Uniform Federal Accessibility Standards.

Emmanuel Andrade, architectural designer, Institute for Human Centered Design

Deborah Ryan, Esq., private consultant, Deborah A. Ryan & Associates

B7

Friday, April 29
10:30 am–12:00 noon | CR

Design review for 40B projects

The Massachusetts Housing Partnership (MHP) and the Department of Housing and Community Development commissioned The Cecil Group to develop a handbook for Chapter 40B Project Design Review. The handbook explains how design is considered in the Chapter 40B review process, which subsidizing agencies use to evaluate building and site design of applications for project eligibility. This technical-assistance manual presents the steps of design review and explains an approach to resolution when the proposed design conflicts with the project context. Learn about the design-review regulations and standards, the process that the agencies use to review projects and the handbook.

Kenneth Buckland AICP, LEED AP, The Cecil Group

Diane Georgopoulos FAIA, MassHousing

B8

Friday, April 29
1:00–2:30 pm | SD

Charlesview: A road map to redeveloping pedestrian-oriented mixed-use neighborhoods

The Charlesview housing development, facilitated by a land-swap agreement with Harvard University, spans two adjacent sites in the Allston/Brighton neighborhood of Boston and replaces an outdated mixed-use complex. Charlesview addresses the needs of urban families with low to moderate incomes and provides rental and homeownership opportunities in one-, two-, three-, and four-bedroom units. This workshop will examine the project's community process, its variety in programming, and its restorative effect in re-establishing a community.

Christopher Hill AIA, principal, CBT Architects

Felicia Jacques, director of development, The Community Builders



Choose to attend sessions in one track or mix by time and day for a customized agenda.



renovation

Rebuilding existing buildings is a quintessential New England challenge. Whether historic preservation, rehabilitation, modern retrofits or additions, altering our buildings for use in the 21st century affects every design and construction professional working in the region. Although some problems will always be unique, we can learn a lot from one another.

C1
Thursday, April 28
8:30–10:00 am | SD

Historic home deep-energy retrofit

How do you implement continuous air and thermal control layers to the exterior of a post-and-beam-frame building while maintaining the building's historic appearance and character? Take a good look at this adaptive reuse project in Portsmouth, New Hampshire's historic district, including costs, winter fuel data and lessons learned in the drive to an 80% reduction in peak heat loss.

James Petersen PE, LEED AP, principal, Petersen Engineering

C2
Thursday, April 28
10:30 am–12:00 noon | SD

Clearing the cloud of confusion around residential insulation systems

Confused by rapidly changing insulation technology? Navigate the rhetoric surrounding various insulation systems by listening to case studies, lessons learned and a step-by-step walk-through of a typical wood-framed house. Understand the cost vs. performance data of the many options available, and walk away with the tools and knowledge to make an informed insulation choice for your next residential project.

Dean Hofelich, associate, LDa Architecture & Interiors

Michael Waters, principal, LDa Architecture & Interiors

Benjamin Marshall, Greenstamp Insulation

Mark Price, principal consultant, Price Sustainability Associates

C3
Thursday, April 28
1:00–2:30 pm | SD

Beyond repair: Historic window replacement

Because seemingly minor changes in window configuration can have surprisingly major—and adverse—effects on the overall appearance of a building, most historic-district design guidelines pay special attention to windows. Look at window evaluation and preservation methods, rehabilitation planning, and specifications for historic applications, and commercial and residential case studies that illustrate successful replacement solutions for windows in historic buildings.

Michael A. Klahr CCPR, business development manager, A.W. Hastings



C4**Thursday, April 28**
3:30–5:00 pm | HSW**New life for the Hayden building**

More than 15 years ago, Historic Boston Incorporated (HBI) intervened to save The Hayden, H. H. Richardson's only commercial building left standing in Boston. After conducting substantial exterior restoration and structural stabilization, the company is redeveloping the building to include distinctive upper-story residential units over ground-floor retail.

Kathy Kottaridis, executive director, Historic Boston Incorporated

Michael Tilford, senior acquisition and development manager, preservation projects, Historic Boston Incorporated

C5**Thursday, April 28**
5:30–7:00 pm | SD**A comparative study of the cumulative energy use of historical vs. contemporary windows**

Presenters compare the life-cycle costs of two residential window systems in a pre-1940 Boston house—an original, double-hung window with a new triple-track storm unit; and a new vinyl, double-hung replacement window—using an algorithm that yields the total present value of all costs associated with a window system over its entire life, including acquisition, installation, maintenance and energy.

Frank Shirley AIA, principal, Frank Shirley Architects

Jarod Galvin RA, LEED AP, project architect, Frank Shirley Architects

Fred Gamble, PhD

C6**Friday, April 29**
8:30–10:00 am | HSW**Specifications for renovation projects**

You're the best person to write specifications for your renovation project—large or small! Learn how to use specs to effectively communicate your design intent to the contractor and protect your client's interests. Get expert tips on preparing general conditions, general requirements,

technical specifications and communicating with your engineering consultants. Handouts include model spec language for typical renovation projects.

Mark Kalin FAIA, FCSI, LEED AP, president, Kalin Associates

C7**Friday, April 29**
10:30 am–12:00 noon | HSW**Wrapping it up: Aesthetic and technical considerations of exterior-cladding decisions**

The most visible component of a house—its exterior enclosure—has at times been the exposed construction material itself, as in the brick bearing wall of a Federal-period house, or the rubble or ashlar masonry of a Richardsonian residence. At other times, it is simply the non-load-bearing division between inside and out, as in a modern residence's glazed wall. Cladding today usually serves as a protective layer that covers a home's exterior wall construction, while helping to buffer its interior from the climate. Common types include wood siding, stucco or EIFS coatings, and contemporary veneers of metal, terra cotta, brick or stone. In recent years, the protective function of some veneers has been reduced to that of a rain screen.

The goal of this workshop is to explore exterior cladding typologies, including "green" and recycled, materials, with a focus on renovation of existing structures, from the perspective of an architect, a supplier of exterior cladding materials, and a general contractor. Aesthetic and technical perspectives will be discussed in the context of technology, energy efficiency, building culture, regionalism, and history.

Gary Wolf AIA, principal, Gary Wolf Architects

Grant F. Rhode, PhD, principal, GF Rhode Construction

Klaas Armster, principal, Armster Reclaimed Lumber Co.

C8**Friday, April 29**
1:00–2:30 pm | SD**Passive House retrofits—A reality check**

Passive House retrofits are an inspiring cause, but what, at the end of the day, are they worth? To answer, this workshop compares and contrasts the goals, methods, costs and post occupancy performance of two renovation projects: one—the JP Green House—seeking Passive House status on a shoestring budget, and the other—a deep energy retrofit of a Belmont two-family—aiming for dramatic savings but stopping shy of Passive House standards. Summing it all up, a moderated discussion will explore the suitability of the Passive House standards to retrofits in the New England climate.

Simon Hare LEED AP, strategic director, Placetaylor

Kristen Simmons AIA, LEED AP, principal, Kristen Simmons Architects

Paul Eldrenkamp CPHC, owner, Byggmeister



Discounts and a free exhibit-hall pass are available through April 7. Register early.

learning



NEW! Learning Stage in the Exhibit Hall

Industry experts deliver a dozen riveting 30-minute presentations at no cost. Gather at the Learning Stage in the exhibit hall. Learning units are not available, and seating is first-come, first-served.

Thursday, April 28, 11:00 am

World colors mix

ASID New England

Just where do colors come from, and how are they changing? From ancient to modern times, color has come from many, sometimes surprising, sources, and they redefine their meanings as well as applications.

Thursday, April 28, 12:00 noon

Does selling oriental rugs Have you tied in knots?

ASID New England

The more you know about a product, the better you'll be able to present that product to your client. This unique and entertaining presentation motivates home furnishings and design professionals to understand quality Oriental and area rugs and the value they represent. The co-presenters bring to bear a passion for Oriental rugs that was instilled by their fathers and grandfathers, and they offer more than 40 years experience themselves in a business that has seen many profound changes in the product itself, where it is sold and what it sells for.

Thursday, April 28, 1:00 pm

Sharpen your digital pencil: Getting started with 3-D modeling using SketchUp

An introduction to 3-D modeling using Google SketchUp. See how this fun-to-use and easy-to-learn software can be implemented throughout a project. SketchUp bridges the gap between 2-D drawing and 3-D modeling by enabling you to draw using a familiar pencil and paper paradigm in a software context. Architects, interior designers, kitchen designers, builders and landscape designers will all benefit. Demonstrations and a practitioner's examples will illustrate the discussion.

Thursday, April 28, 2:00 pm

Window and door security

Anderson/Eagle

Windows and doors play a key role in security as the main entry points to a residence or building. Existing security sensors often impact both the beauty of and warranty coverage for windows and doors. For new construction or retrofits, integrated wireless security sensors that indicate locked or unlocked as well as closed and open without sacrificing aesthetics or coverage is now a reality. Learn how home security in windows and doors can be part of your next project design.

Thursday, April 28, 3:00 pm

Collaboration

Payne Bouchier

Establishing a working team between client, architect, builder, interior designer, landscape architect, engineer, and beyond at the earliest possible juncture is at the foundation of Steve Payne and Payne Bouchier's practice. Steve will address the collaborative process from a builders perspective, sharing lessons learned from over twenty-five years of experience.

Thursday, April 28, 4:00 pm

Design with green lighting

Wolfers

Lighting technology is changing rapidly, and the future is green. Keeping abreast with the new LED and fluorescent light sources and fixtures that are flooding the market is challenging for the specifiers and end users alike. This program will simplify what you need to know, target the challenges that you may encounter when creating your lighting design, and look at product and lamp sources so that you can decide which is best for your application.

Thursday, April 28, 5:00 pm

Electronic system infrastructure requirements

simpleHome

Supporting the multitude of technologies found in today's connected homes requires planning, specialized installation and a solid infrastructure. Trends, future technologies and their impact on today's homes will be discussed. Learn the basic infrastructure requirements needed to support these technologies as well as how to define the components of a structured wiring system.

Friday, April 29, 10:00 am

Building a better deck and rail using trends, installation and design elements

TimberTech

This session will provide you with basic information on decking and railing material, installation criteria, market trends and code listings.

Friday, April 29, 11:00 am

Cellular PVC siding

NuCedar Mills

Cellular PVC trimboard has gained popularity as a premium alternative to wood trimboard over the past 10–15 years, and this session will focus on all forms, including shingles, vertical siding, clapboard and trim. The same materials are now being milled to historic cedar specifications, and when factory pre-finished with solar-reflective, ceramic-based pigments, become almost maintenance free. Learn how to specify and properly install these products with confidence. Applicable LEED and NGBS building criteria will be reviewed.

Friday, April 29, 12:00 noon

The design and performance advantages of composite shake

Enviroshake

This presentation provides an overview of the characteristics and green features of composite shake vs. alternative shake options, as well as a discussion of the relationship of composite shake to various green certification programs.

Friday, April 29, 1:00 pm

Hardwood floor refinishing and real answers in hardwood floors

C&R Flooring, Wood Floor Inspectors of New England and Bona, USA

This presentation addresses current issues that are region specific to New England, including application issues with Radiant heat, what's new in adhesives, VOC regulations, and the latest finish and staining or dyeing procedures.

Friday, April 29, 3:00 pm

Healthy walls = rainscreen and ventilation

Keene Building Products

This presentation covers several topics, from the history of wall design to the components of a rainscreen system and how rainscreen and mortar deflection work in different applications. The benefits of a rainscreen system, research and codes on the need for rainscreen, and how to design for better moisture protection will also be discussed.



Admission to the Learning Stage is free when you register for the RDC exhibit hall or sign up for workshops!

How to register

1. Online

www.rdcboston.com/register

2. Phone

781-821-6730

3. Fax

Before April 15, 2011, you may fax your completed registration form to 781-821-6725.

4. Mail

Mail your payment and completed registration form by April 9, 2011, to:

RDC 2011
c/o CrossTech Partners
437 Turnpike Street
Canton, MA 02021

5. On-site

April 28, from 7:00 am–6:00 pm,
April 29, from 7:00 am–3:00 pm

Accommodations



Stay at the beautiful Seaport Hotel, located on-site at the Seaport World Trade Center.

The special rate for RDC attendees is \$279 single/double occupancy. Register online at www.seaportboston.com. Call 877-732-7678 before March 28, 2011, to make your reservations. Be sure to mention you are with RDC. Rates are subject to availability, so book your room early.

About the Seaport Hotel



This distinctive, four-diamond hotel offers striking views of Boston Harbor and the city skyline. All Seaport Hotel Guest Rooms and Suites offer complimentary hotel wireless Internet access; flat-screen televisions; Bose Wave radios; large work desks; marble bathrooms; and a selection of down, hypoallergenic and memory-foam pillows from our Pillow Library.

Free workshops

Volunteer at RDC and earn free admission to workshops. Find details at www.architects.org/bbvolunteer or call 617-951-1433 x239.

Confirmations

Badges will not be mailed prior to the event. When you register, you'll receive an email confirmation with a bar code. Please print it out and bring it with you to the Seaport World Trade Center, where you'll receive your badge and tickets.

Refund policy

A full refund or one-to-one credit will be provided for all events that RDC cancels. Full refunds or credit (less a 10% processing fee) also will be provided if your refund request is received in writing by RDC on or prior to April 1, 2011. It is not possible to honor refund requests received after April 1, 2011.

General questions

If you have questions about registering for workshops, exhibiting, sponsorship or advertising opportunities, please call 800-544-1898.

Stay at the beautiful Seaport Hotel; the special rate for RDC attendees is \$279.





Conference pricing

Admission to the Exhibit Hall and Learning Stage is FREE when you purchase any workshop or package.

	Package includes	Price through 4/7/11	Price from 4/8/11
Full Conference Pass	8 workshops 5 Thursday, 3 Friday	\$450	\$525
1-Day Pass—Thursday	5 workshops on Thursday	\$325	\$425
1-Day Pass—Friday	3 workshops on Friday	\$195	\$250
3-Workshop Package	Choose any 3 workshops during the two-day event	\$195	\$250
Single Workshop	1 Workshop	\$75	\$95
Exhibit Hall		FREE	\$15

Registrations cannot be shared. All workshops in every package must be attended by the same individual.

The built environment **shapes the world**
the world **shapes our ideas**
our ideas **shape the built environment**

ab
ArchitectureBoston

An ideas magazine published by the Boston Society of Architects
architectureboston.com

Project credits

Cover

Main image: design by ZeroEnergy Design, photograph by Eric Roth.

Bottom, left to right: design by Shelton, Mindel & Associates, photograph by Michael Moran; design by Anmahian Winton Architects; design by Abacus Architects and Planners, photograph by Eric Roth.

Page 3

Design by Shelton, Mindel & Associates, photograph by Michael Moran.

Page 7

Top: design by Andrew Cohen Architects, photograph by Greg Premru.

Bottom, left to right: design by Maryann Thompson Architects, photograph by Anton Grassl/Esto; design by Arrowstreet, photograph by Susie Kocke; design by Julian Bonder + Associates.

Page 8

Top: design by Maryann Thompson Architects, photograph by Craig Okerstrom-Lang.

Bottom, left to right: design by Wilson Architects; design and rendering by Anderson Anderson Architecture; design by ZeroEnergy Design, photograph by Eric Roth;

Page 9

Design by KVA Kennedy & Violich Architecture.

Page 10

Top: design by Della Valle Bernheimer, photograph by Francis Dzikowski.

Bottom: design by Joan Wood Associates-Architects.

Page 12

Top: design by Arrowstreet.

Bottom: design by Signer Harris Architects, photograph by Warren Jagger; design by Abacus Architects and Planners, photograph by Eric Roth; design by Ann Beha Architects, photograph by David Lamb Photography.

Page 13

Design by Ruhl Walker Architects, photograph by John Horner Photography.

Page 17

Top, center: design by ZeroEnergy Design, photograph by Eric Roth.

rebuild

Residential Design and Construction 2011 Registration Form

Please print. Submit a separate copy of this form for each registrant.

First name

Last name AIA, ASID, etc.

Title

Firm or affiliation

Street

City State ZIP

Daytime phone Fax

Email address

AIA membership number (if applicable)

You must include your AIA number to receive LUs automatically.

1. Title/Function

(Circle one letter.)

- A CEO/Owner/Principal
- B VP/Associate/Project Manager
- C Comptroller/Business Manager
- D Marketing Director/Coordinator
- E Computer Specialist/CAD
- F Specifier/Cost-Estimator
- G Facility Manager
- H Intern Architect
- I Contractor
- J Administrator/Office Manager
- K Landscape Architect
- L Engineer
- M Planner/Urban Designer
- N Architect/Project Architect
- O Interior Designer
- P Educator/Student
- Q Other: _____

2. Type of firm

(Circle all that apply.)

- A A/E or E/A
- B Architecture only
- C Engineer only
- D Contractor/CM/Builder
- E Facility management/Development
- F Government
- G Interior design
- H Landscape architecture
- I Educational institution
- J Other: _____

3. Number of employees

(Circle one letter.)

- A 1-10
- B 11-25
- C 26-50
- D 51+

4. Your specifying role

(Circle all that apply.)

- A Make final decision
- B Recommend
- C No role

5. Your age

(Circle one letter.)

- A Under 30
- B 30-40
- C 41-50
- D 51-60
- E Over 60

6. Is this your first year at RDC?

- A Y
- B N

7. I am a member of

(Circle all that apply.)

- A AIA/Mass.
- B AIA
- C ABC
- D AGC
- E ASID
- F ASLA
- G BAGB
- H BOMA
- I BSA
- J BSCES
- K CORA
- L CORENET
- M CSI
- N IESNA
- O IFDA
- P IFMA
- Q IIDA
- R NAIOP
- S NAHB
- T NARI
- U NECMA
- V NESEA
- W NEWIRE
- X NKBA
- Y SMPS
- Z ULI
- AA USGBC
- BB Other: _____

Conference Pricing

All workshops in any package must be attended by the same individual. Registrations cannot be shared.

Indicate your selections by writing the workshop numbers in the spaces provided.

Full Conference Pass

5 workshops on Thursday

1 _____ 2 _____ 3 _____ 4 _____ 5 _____

3 workshops on Friday

1 _____ 2 _____ 3 _____

Advance: **\$450** Price from 4/8/11: **\$525** \$ _____

1-Day Pass—Thursday

5 workshops on Thursday

1 _____ 2 _____ 3 _____ 4 _____ 5 _____

Advance: **\$325** Price from 4/8/11: **\$425** \$ _____

1-Day Pass—Friday

3 workshops on Friday

1 _____ 2 _____ 3 _____

Advance: **\$195** Price from 4/8/11: **\$250** \$ _____

3-Workshop Package

3 workshops on either day

1 _____ 2 _____ 3 _____

Advance: **\$195** Price from 4/8/11: **\$250** \$ _____

Single Workshop

Individual workshops (Circle your selections below.)

Advance: **\$75** _____ @ **\$75** = _____

Price from 4/8/11: **\$95** _____ @ **\$95** = _____

Thursday

- | | | | | |
|----|----|----|----|----|
| A1 | A2 | A3 | A4 | A5 |
| B1 | B2 | B3 | B4 | B5 |
| C1 | C2 | C3 | C4 | C5 |

Friday

- | | | |
|----|----|----|
| A6 | A7 | A8 |
| B6 | B7 | B8 |
| C6 | C7 | C8 |

Admission to the Exhibit Hall and Learning Stage is FREE when you purchase any workshop or package.

Exhibit Hall

Advance: **Free** Price from 4/8/11: **\$15** \$ _____

Total cost of all selections: \$ _____

Payment

Check or money order enclosed, **payable to Residential Design and Construction 2011**

Charge to my credit card: Visa MC Amex

Credit-card number

Credit-card expiration date

Name exactly as printed on card



INTRODUCING THE NEW ULTIMATE GLIDER
redesigned
AND THE ULTIMATE INSWING FRENCH DOOR!

Marvin's newest additions to the Ultimate line of products offer exceptional design

flexibility, performance and aesthetics. Visit Booth #316

at Residential Design and Construction to learn more about Marvin's

solutions for your next remodeling or replacement project.

For more information or a Retailer near you, call 800.394.8800.



MARVIN 
Windows and Doors

Built around you.®

www.marvin.com



Residential Design and Construction

200 Seaport Boulevard
Suite 50
Boston, MA 02210